

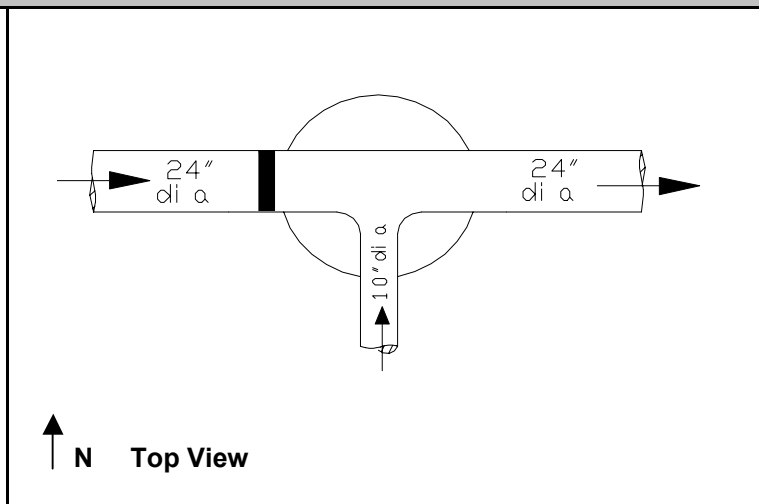
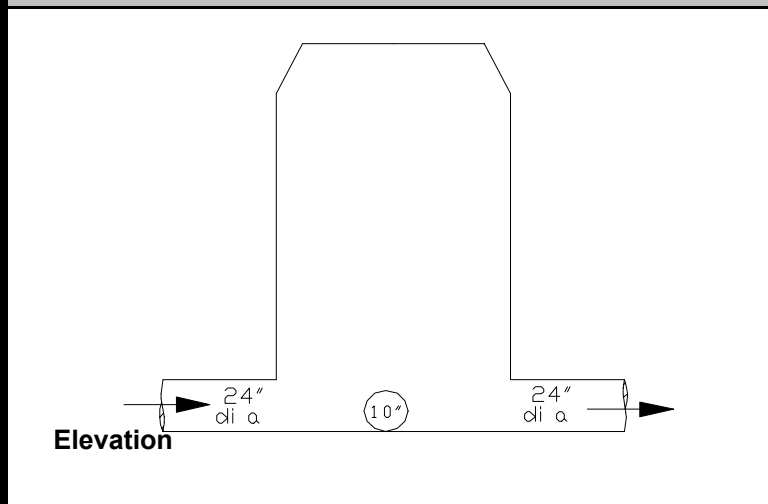
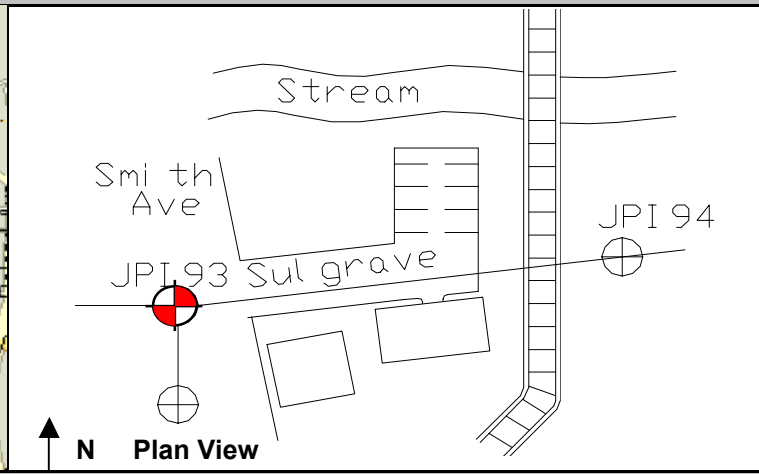
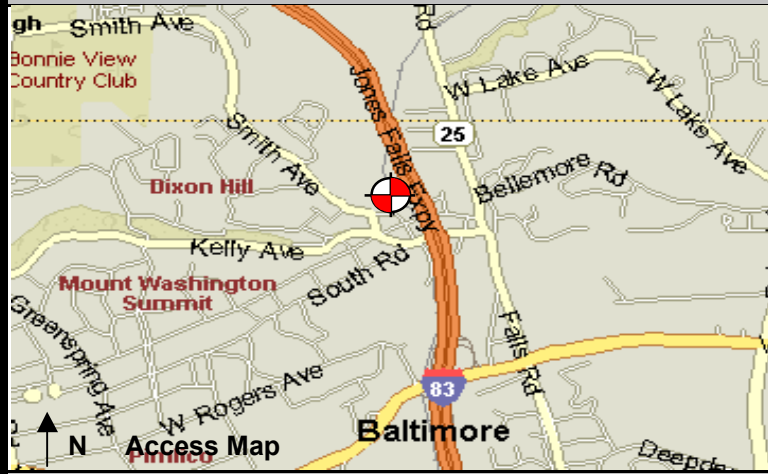


a division of ADS Corporation

# Baltimore SSO Site Investigation Report

FM Initials: DF  
Project Number: 02 Upper Jones Falls

Site Name:	02_JPI93I	Monitor Series:	4000	Monitor S/N:	1189	Manhole #:	JPI93I		Investigation Information:  Upstream Input: (L/S, P/S) N/A  Upstream Manhole: JPI92  Downstream Manhole: JPI94  Depth of Flow: 10.5"  Description of Site Hydraulics:
Address / Location:	Intersection of Newbury St and Sulgrave Ave	Map Page #:	2	Map Grid #:	19 GG <sub>2</sub>				
		Pipe Height:	24"	Pipe Width:	24"				
		IP Address:							
Access:	Walk (Residential)	GPS Coords:	N DD.dddd		W DD.dddd				
			39 22.156		76 39.043				
Date/Time of Investigation:	1/27/2004 10:00								



<b>Manhole Information:</b>
Manhole Depth: 15'
Manhole Material / Condition:
Brick / Good
Active Drop Connections?
No
System Character:
Residential
<b>X</b> Commercial
Industrial

**Notes:**

<b>Legend:</b>
Cast Iron Flap Valve
Sensor Location
N.T.S.- Not to scale

The monitoring period ended as of September 30, 2005.